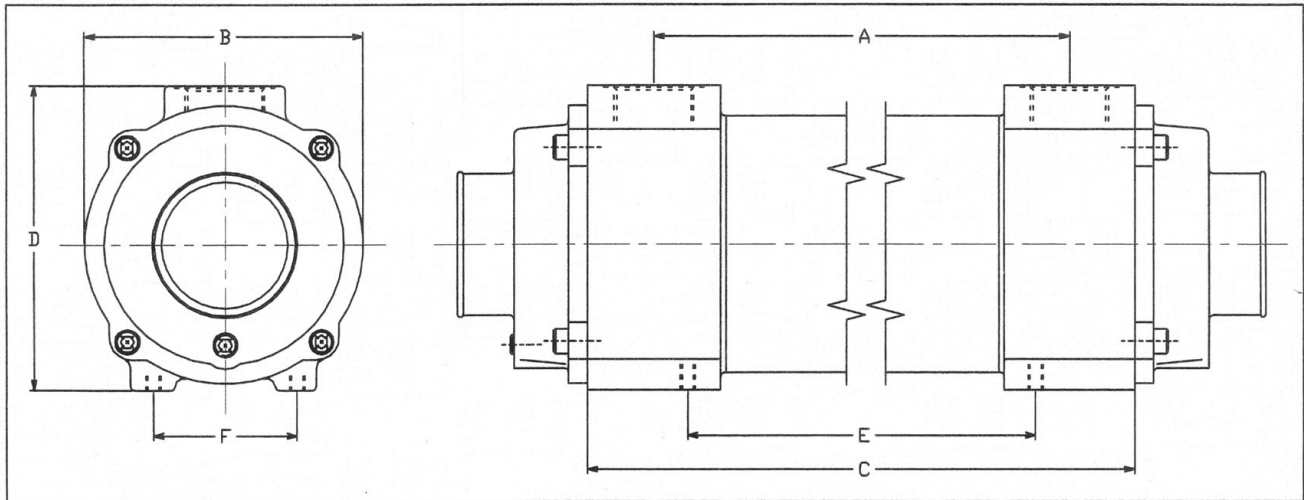


## FD SERIES DIMENSIONS



TYPE	A	B	C	D	E	F	1 PASS	2 PASS	OIL PORT	UNIT WEIGHT	M8 MOUNTING HOLE (X4)
FD0	199	147	269	161	161	76	✓	✓	1¼' BSP	10KG	WATER PORT SIZING SEE TABLE BELOW
FD1	297	147	367	161	259	76	✓	✓	1¼' BSP	13KG	
FD2	391	147	461	161	353	76	✓	✓	1¼' BSP	12KG	
FD3	571	147	641	161	533	76	✓	x	1¼' BSP	15KG	
FD4	750	147	819	161	711	76	✓	x	1¼' BSP	19KG	

OPTIONAL ALUMINIUM WATER ENDS								
TYPE	1P-50A	1P-57A	1P-75A	1P-50L	1P-57L	1P-75L	2P-50A	2P-57A
FD0	✓	✓	x	✓	✓	x	✓	✓
FD1	✓	✓	✓	✓	✓	✓	✓	✓
FD2	✓	✓	✓	✓	✓	✓	✓	✓
FD3	x	x	✓	x	x	✓	x	x
FD4	x	x	✓	x	x	✓	x	x

**EXAMPLE**

1P 50 A

↑ STRAIGHT CONNECTION

↑ HOSE CONNECTION SIZE

↑ 1 PASS—SINGLE FLOW

**Tubestack Bundle:** Copper tubes, aluminium baffle plates and brass tube plates.

**Cylinder Body:** Extruded aluminium.

**Aftermarket:** All FD units are serviceable, spares are readily available

